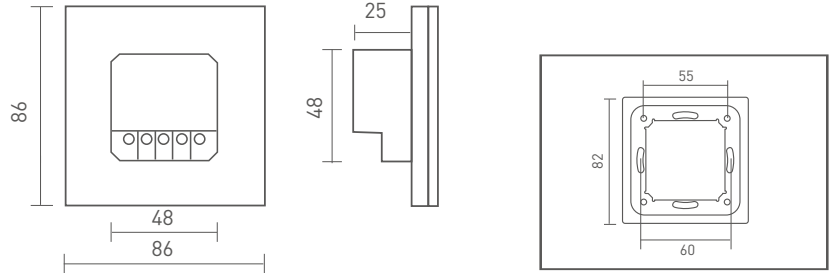




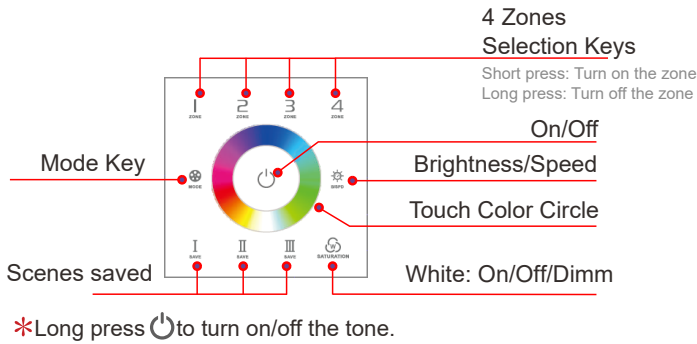
Technical specs:

TOUCH 03L1 RGBW Touch Panel - 4 zones

Input Voltage: 100~240Vac
 Output Signal: DMX512 (4 zones)
 Working Temp.: -30°C ~55°C
 Dimensions: L86×W86×H36(mm)
 Weight(G.W.): 225g



Functions:



Changing Mode Key

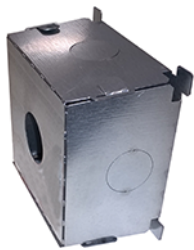
1. Static Red
2. Static Green
3. Static Blue
4. Static Yellow
5. Static Purple
6. Static Cyan
7. Static White
8. RGB Jumping
9. 7 Colors Jumping
10. RGB Smooth
11. Full Colors Smooth
12. Static dark

DMX512 addresses:

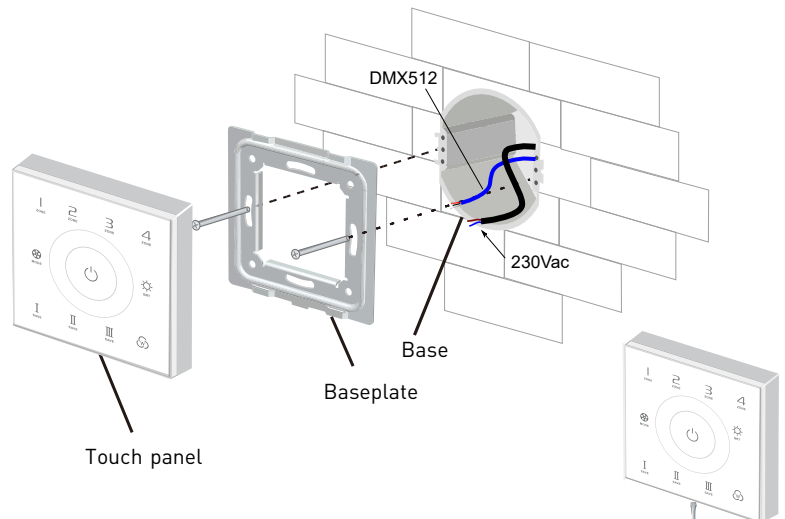
- Zone 1: adrss 1/2/3/4
- Zone 2: adrss 5/6/7/8
- Zone 3: adrss 9/10/11/12
- Zone 4: adrss 13/14/15/16

Installation Instruction:

90x90x50 mm

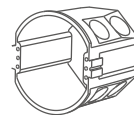
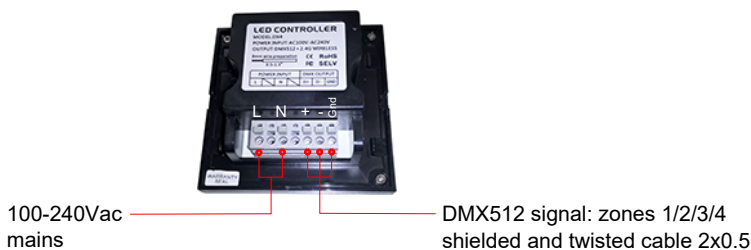


compulsory outercasing WC0302

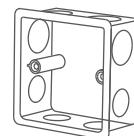


Uninstall

Connection:



European style



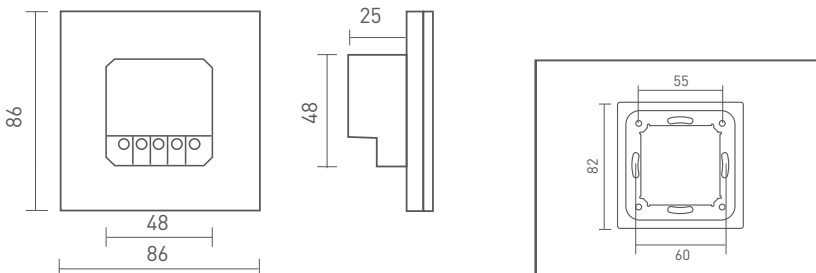
86 size



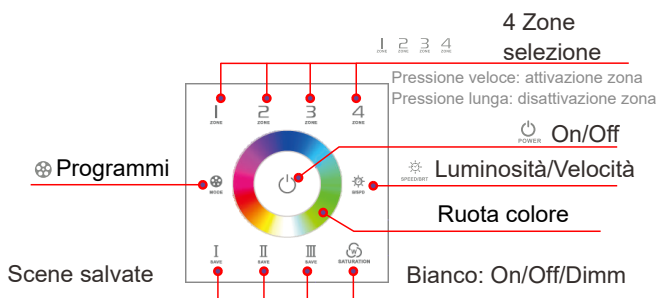
Dati tecnici:

TOUCH 03L1 RGBW Touch Panel - 4 zone

Input: 100~240Vac
 Segnale uscita: DMX512 (4 zone)
 Temp.funzionamento: -30°C ~55°C
 Dimensioni: L86xW86xH36(mm)
 Peso: 225g



Funzioni:



* Pressione prolungata per spegnere i toni pulsante

Programmi:

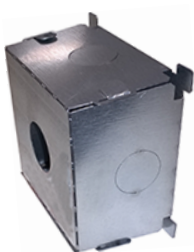
1. Rosso
2. Verde
3. Blue
4. Giallo
5. Rosa
6. Ciano
7. Bianco R+G+B
8. RGB Jumping
9. Cambio 7 colori a salto
10. Variazione RGB morbida
11. Cambio colori morbido
12. Nero (R+G+B spenti)

Indirizzi DMX512:

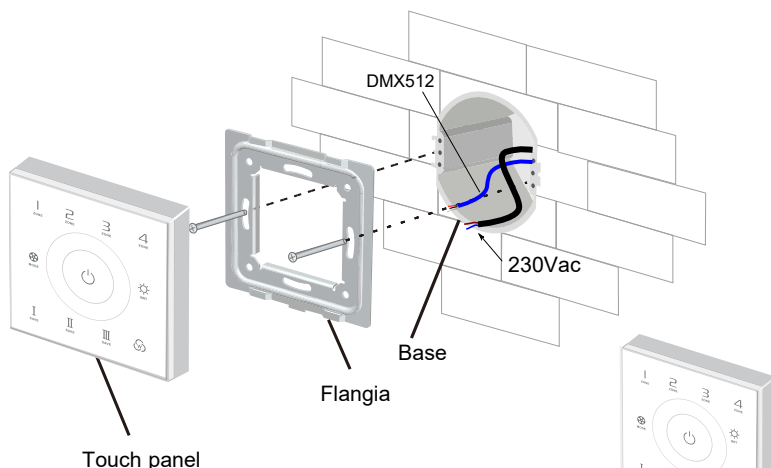
- Zona 1: adrss 1/2/3/4
 Zona 2: adrss 5/6/7/8
 Zona 3: adrss 9/10/11/12
 Zona 4: adrss 13/14/15/16

Installazione:

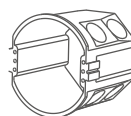
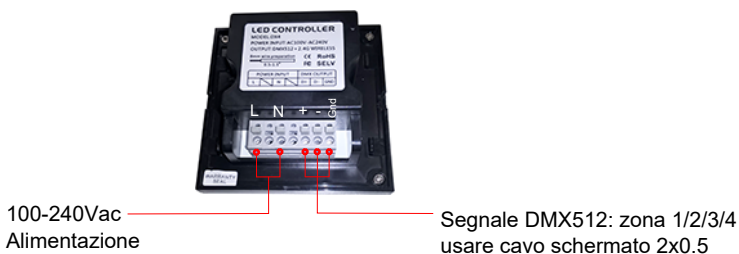
90x90x50 mm



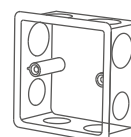
cassaforma obbligatoria WC0302



Connessione:



Modello europeo



86x86

Disinstallare